



BLUEBIRD®

Operator Manual

BL 400 Blower

Safety and Operating instructions

BLUEBIRD ASSIST™

Access instructional videos and information:
Set-up, how-to-use, maintenance, lawn care tips and
part details. Text or Scan to get started!

TEXT
blower
TO
1 (844) 411-7846



Model number
969 121149

Table of Contents

Safety	3
Assembly.....	6
Pre-operation / Starting.....	7
Operation.....	8
Maintenance.....	9
Storage.....	10
Parts drawings.....	11
Parts list by number.....	12
Notes.....	14

Safety Information



Attention; this machine can be dangerous! All operators should fully read all instructions and use extreme care and awareness when operating the Unit. Failure to follow the instructions or modify the equipment can result in personal injury.

Thank you for purchasing the BlueBird walk behind Blower. It will allow you to clean up by blowing debris in a multitude of applications. Please become familiar with the unit before operating.

Enter your model number and serial number for future reference.

Model number _____ Serial number _____

If you have any problems or concerns about this unit please call your dealer or contact us at Customerservice@BlueBirdturf.com

Mandatory Operating preparation:

- Read this safety and operation manual to understand proper safety procedures and operation.
- Do not allow anyone to operate this unit without proper training.
- Do not allow children to operate the blower or feed anything into the unit.
- Do not put any part of your body in the chute area or near any moving part including clothing.
- Never attempt any clearing of the machine while it is operating or blade is still moving.
- Never operate unit with any guards not in place.
- All work should be done with the engine off, cooled down and the spark plug disconnected. The spark plug wire should be moved away from the spark plug to prevent unwanted accidental start up.
- Do not operate this equipment under the influence of any type of medication or alcohol which might impair reflexes or judgment.
- Never try to remove anything from the blower while it is running.
- Do not point the blower in the direction of anything that could be damaged by flying debris, including people, glass, vehicles, etc.
- Keep all observers including (especially) children and pets away from unit including the discharge area.
- Wear safety glasses, hard hat, ear protection, gloves, hard toe shoes and avoid loose fitting protective clothing.
- Check for all safety decals and instructions to make sure they are legible.
- This is a walk behind unit, do not attempt to tow or push this unit with any powered vehicle including an ATV or garden mower or tractor.

Safety symbols used on equipment



Danger: this machine must be operated in a safe manner according to the directions in the manual. Failure to observe the instructions or modify or use the machine when repair is needed could result in serious injury or death. As with any power equipment caution should be observed!



PROP. 65 WARNING

The State of California contains one or more chemicals known to the State of California to cause cancer, birth defects, or other reproductive harm.



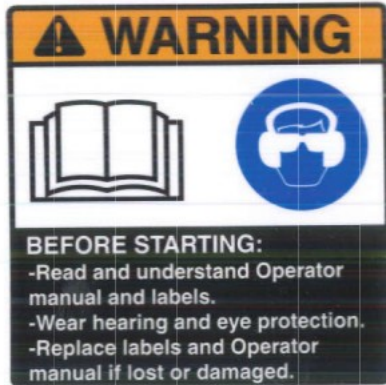
Read the safety and operating manual: read and understand this manual before operating this equipment.

Eye and hearing protection must be worn when operating this equipment.



Warning : Rotating blades !
Do not insert body parts into the openings.

Safety symbols used on equipment continued:



Disconnect spark plug and read manual before servicing the equipment



Warning: Do not get in the path of discharge debris, it could cause injury.



Danger:: Fan Blades can cause serious injury!



Bluebird assist will get you access to videos, instruction, parts manuals and more. Use a free QRcode reader app on you phone to access the information. When you have the app open focus on the black square and when the app reads it, you will have access to the web link. Click on it and you will then have access to all of the information. You an also text blower to the phone number on the decal.

Assembly

The crate is held down by four clips, two on each end. Remove them and lift off the shipping crate and remove straps holding down the unit to the pallet. If the unit is shipped in a box, remove box for access to unit.

Install the handle using the supplied hardware and secure tightly.



Pre-operation

- Never fuel the unit or run the unit in an enclosed space. Residual gas fumes could be ignited by a water heater or furnace in a garage. Gas fumes are very flammable and you should change clothes before operating if some is spilled on you.
- Clean up any spills and do not dispose of gas soaked rags in the trash, they may spontaneously combust.
- Never smoke while fueling the unit. Make sure the fuel cap is secure on both the machine and the gas can after fueling.
- Use fresh gasoline and keep lid on gas can when not refueling.
- Store fuel away from heat or flame.
- Use a fuel stabilizer at time of purchase to insure gas will remain volatile.
- Make sure the unit is on a stable level surface.
- Check all bolts and guards to make sure they are tight and in proper working order.

Starting information

- Check to make sure the discharge is empty.
- Fill fuel tank before starting and also check the oil level.
- Start engine based on engine manual directions.
- Do not touch muffler during operation.
- Not every situation can be covered in a manual, use good judgement and never push equipment beyond its capability.

Operation

- This machine is designed to blow leaves or debris. Any other use is not intended.
- The customer is responsible for third parties and any damage to their property.
- Never attempt to alter engine governor to increase maximum speed.
- Never modify a guard and keep them in good working order.
- Never look into the intake or discharge chutes when the unit is running.
- Keep the air intake on the engine clean of debris.
- Never remove the air cleaner while the engine is operating.
- Never leave the unit running unsupervised.
- The unit should only be used with ample lighting (daylight preferred).
- The front discharge position is used for debris removal along fences and walls and other straight surfaces. Moving the deflector to the front position while the unit is running will keep it in that position until the unit speed is reduced or is shut off. The deflector can manually returned to the side discharge position by moving the lever.
- The side discharge allows the operator to form piles of debris to the side or remove from a driveway or other surface. The airflow deflector can be changed in attitude to either blow across a surface or get underneath leaves to facilitate blowing of wet leaves.
- Check safety labels daily and replace when necessary.
- The rear tires should be inflated to 30 PSI. The front to 20 PSI
- Check engine oil daily or during extended operation

Maintenance



When performing any maintenance on this unit, shut unit off and then disconnect the spark plug wire. Place the end away from spark plug to prevent accidental starting!

When doing any repair refer to qualified repair personnel if you are uncertain of the procedure.

- Never operate unit with any guards not in place.

FAN REMOVAL

- Remove intake guard and ring
- Remove the bolt from the center of the bushing.
 - Use Penetrating oil on the contact points of the bushing, crankshaft and fan and let sit overnight. Use a three fingered gear puller to remove the bushing from the crankshaft. Do not try to put bolts in the flange to remove the bushing you will break the flange.
- The fan cannot go backwards towards the engine, there is a shoulder on the crankshaft.

Use a new tapered bushing when reinstalling the fan assembly

- Install bolt and washer in center of bushing and tighten to 50ft/lbs

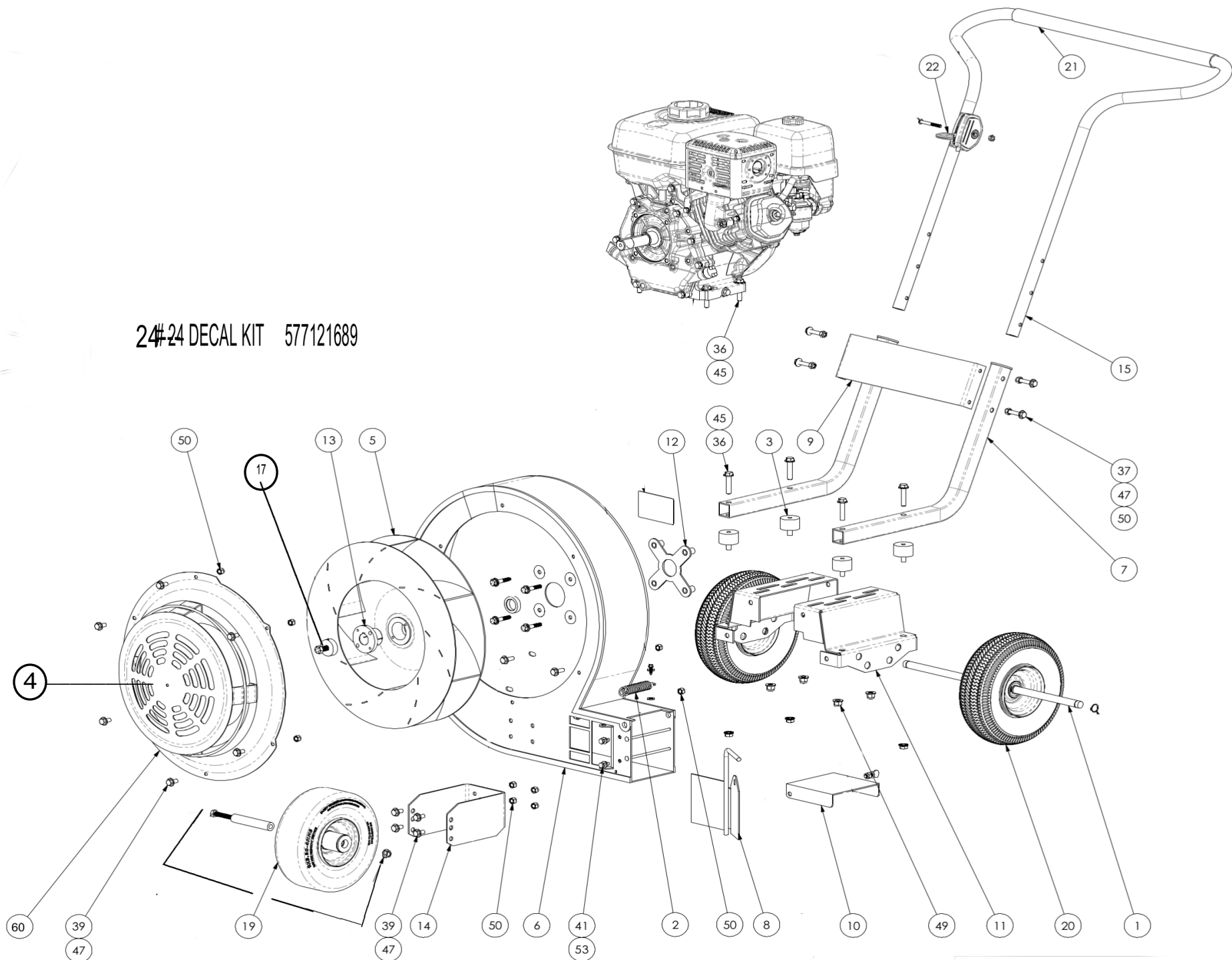
Engine servicing

- Check air filter before use, replace when dirty.
- Change engine oil as required by the engine manual, more often if using in dirty conditions.

Storage

- Some pieces of power equipment are not used frequently. This can cause problems due to the fact fuel has a limited shelf life.
- It is very hard to remove all fuel from a carburetor so it is recommended to add fuel stabilizer to fresh fuel and fill up the fuel tank. By having the fuel tank full it reduces air space which helps with prolonging the life of the fuel.
- Run the unit for two minutes to have the fuel get into all parts of the carburetor and shut off the engine.
- Even when using stabilized fuel if the unit is not run for over 6 months the stabilized fuel should be discarded (please dispose of correctly according to local codes) and refilled with fresh fuel.
- Using old fuel can leave deposits in the engine even if it is able to start the unit.
- Make sure unit is clean before storage. Make sure it dries completely before storing.
- Change oil as prescribed in the engine manual that comes with the unit. Usually changing oil after the season removes contaminated oil from sitting in an idle unit.

24#24 DECAL KIT 577121689



PARTS

1	AXLE ROD.....	577121687
2	SPRING	577121022
3	VIBRATION MOUNT.....	577121648
4	AIR INLET ASSEMBLY	577121682
5	FAN	577121679
6	HOUSING ASS	577121688
7	LOWER HANDLE	577121685
8	FRONT DISCHARGE.....	577121653
9	LOWER BRACE.....	577121686
10	DISCHARGE FLAP	577121684
11	ENGINE BASE.....	577121020
12	ENGINE SPACER.....	577121019
13	BUSHING TAPER LOCK	539923381
14	FRONT WHEEL BRACKET.....	577121021
15	UPPER HANDLE.....	577121681
17	BOLT KIT FOR FAN.....	577122241
19	FRONT WHEEL	577121680
20	REAR WHEEL.....	577120014
21	FOAM GRIP	539052561
22	THROTTLE	577121657
24	DECAL KIT	577121689

PARTS

36 BOLT.....	577122023
37 BOLT.....	577122025
39 BOLT.....	577122031
41 BOLT.....	577122029
45 WASHER.....	577122024
47 WASHER.....	577122026
49 NUT.....	577122028
50 NUT.....	577122027
53 NUT.....	577122030
60 AIR INLET BASE.....	577121683

Notes

Notes

Notes