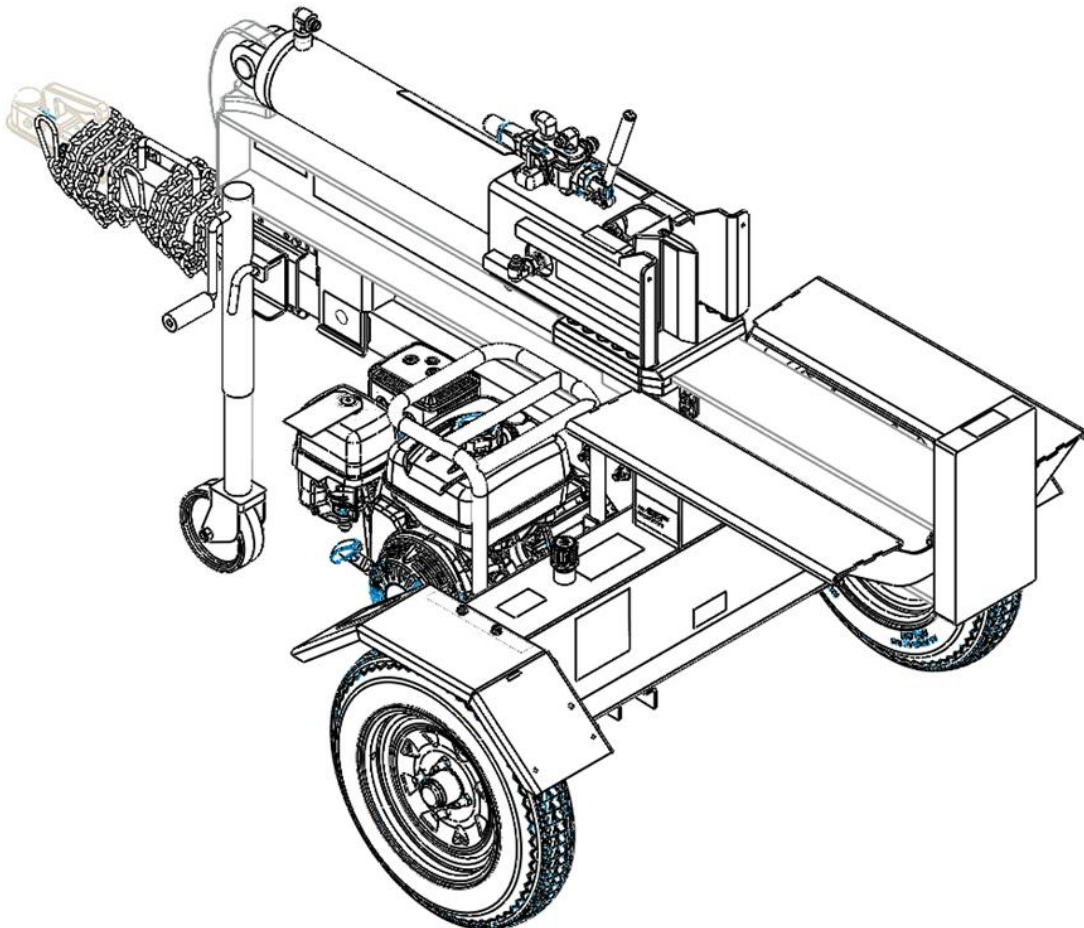




Operator Manual

Log Splitter

Model: LS34



Original Instructions

Please read the operator's manual carefully and make sure you understand the instructions before using the machine.



WARNING

Engine exhaust, some of its constituents, and certain vehicle components contain or emit chemicals known to the State of California to cause cancer and birth defects or other reproductive harm.

CONTENTS

Sr. No	Table of Contents	Page No
1	Introduction	4
2	Symbols and Decals	5
3	Safety	6
4	Assembly	12
5	Hydraulic Oil Filling Instructions	14
6	Operation	15
7	Troubleshooting	16
8	Parts Manual	17

INTRODUCTION

Congratulations

Thank you for purchasing a BlueBird lawn care product. Through your confidence in us, you have chosen an exceptionally high-quality product.

This manual is a valuable document. It describes your new BlueBird machine. It is important for your own safety during operation and long-term reliability of the equipment to read the manual carefully before attempting to use the machine. Following the instructions (use, service, maintenance, etc.) can considerably increase the lifespan of your machine and even increase its resale value. Please contact your dealer for more information. If you sell your BlueBird machine, make sure to give the operator's manual to the new owner.

Use

This machine is designed to split wood logs cut to a size to fit within the machine splitting wedge opening using a hydraulically powered moving ram. Based on operator's usage preferences, the machine can be operated in both vertical and horizontal positions. The log splitter can be towed behind a vehicle equipped with an appropriate hitch.

Insure Your Machine

Contact your insurance company to check on insurance coverage for your new machine. You should have all-inclusive insurance for liability, fire, damage and theft.

Good Service

BlueBird's products are available only in specialized retail trades with complete service. This ensures that you as a customer get only the best support and service. Before the machine was delivered it underwent inspection and was adjusted by your dealer. When you need spare parts or support in service questions, guarantee issues, etc., please consult the following professional or contact us at customerservice@bulebirdturf.com.

Serial Number

The machine's serial number can be found on the printed plate attached to the hydraulic tank. The plate includes following information:

- The machine's type designation (MODEL)
- The machine's serial number (S/N)







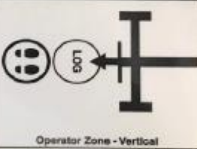


Please state the type designation and serial number when ordering spare parts.

The engine's serial number is punched into the crankcase above the oil drainage screw.

The engine type is specified on the crankcase under the air filter but also appears on the decal on the starter.

Please state engine serial number and type when ordering replacement engine parts.

SYMBOLS AND DECALS

	<p>Danger: This machine must be operated in a safe manner according to the directions in the manual. Failure to follow the instructions, modify or use machine without proper maintenance may potentially result into serious and potentially fatal injuries</p>	 <p>Check engine oil level and add if necessary. See Engine Manual for types of oil and operating ranges. DO NOT overfill. Vérifier le niveau d'huile moteur et faire l'appoint le cas échéant. Voir le manuel Moteur pour les types d'huiles recommandées et leur autonomie. NE PAS trop remplir. Compruebe el nivel del aceite del motor y añada si fuera necesario. Consulte el Manual del motor para ver los tipos de aceites y los rangos operativos. NO llenar en exceso.</p>
	 <p>WARNING: This product can expose you to chemicals or substances known by the state of California to cause cancer or reproductive harm. For more information go to www.P65Warnings.ca.gov</p> <p>160-122344-B</p>	
	<p>NOTICE</p> <p>READ OWNERS MANUAL PRIOR TO FILLING & PRIMING WITH UNIVERSAL HYDRAULIC FLUID. TO CHECK PROPER FILL LEVEL, INSERT DIPSTICK & REMOVE, BUT DO NOT TIGHTEN DOWN. ENSURE FLUID LEVEL IS WITHIN ACCEPTABLE RANGE WITHOUT TIGHTENING CAP DOWN.</p> <p>160-121320</p>	 <p>WARNING</p> <p>HYDRAULIC OIL is required prior to starting engine.</p> <p>Please see manual for requirements.</p>
	 <p>WARNING</p> <p>Pinch Point can cause serious injury. Stay clear.</p> <p>160-121207</p>	
<p>OPERATING INSTRUCTIONS</p> <p>GENERAL</p> <ul style="list-style-type: none"> Always wear proper eye protection, hearing protection, safety gloves and safety shoes. Never wear loose clothes or dangling objects when using this equipment. Stay in the operator zone while actuating any of the controls. Never actuate any of the controls when others are within 10ft (3m) of this machine. Always read safety and operators manual before using this equipment. <p>Setup</p> <ul style="list-style-type: none"> Ensure log splitter is on firm dry level ground. Ensure log splitter is secure from unintended movement. Position splitter beam in horizontal or vertical position. Ensure Locking Pins are secured in locked position. <p>Splitting Logs</p> <ul style="list-style-type: none"> Turn engine switch to "on" position and start engine. Position log on beam against bottom plate. Pull down on safety release handle. While holding down safety release handle, move valve control handle to extend ram and split log. Release valve control handle to stop splitting log. Pull back on valve control handle to return wedge and ram to the start position. Remove split wood from working area.   <p>Operator Zone - Horizontal Operator Zone - Vertical</p>		 <p>WARNING</p> <p>TAMPERING WITH PRESSURE VALVE SETTINGS WILL VOID WARRANTY</p> <p>160-123197</p>
		 <p>WARNING</p> <p>ENSURE LATCH IS ENGAGED BEFORE OPERATING OR TOWING</p> <p>160-123316-A</p>

SAFETY

General Information

This manual will assist you in the safe operation and proper maintenance of your BlueBird equipment. Read it thoroughly before attempting to operate the machine. Call your dealer or BlueBird if additional information is required. This equipment should not be modified without the manufacturer's prior written authorization. Doing so may not only affect the equipment's performance and durability, but also create safety hazards for the operator and the surroundings. Warranty will be void if changes are made to the equipment without the manufacturer's prior written authorization.

Safety Procedures

DO:

- Read all maintenance and service instructions before attempting work.
- Read engine manufacturer's operating and maintenance instructions.
- Remove spark plug wire before commencing service.
- Make sure the ground is level and is free of ice and or water.
- Remove split logs and debris from the area after splitting to prevent tripping.
- Square the log on both ends to 26 inches maximum.
- Stay in the operator zone while using the unit. See page 15 for reference.
- Wear safety glasses, hard hats, ear protection, gloves, steel-toe shoes while operation, avoid loose fitting protective clothing.
- Confirm that all the observers including children and pets are away from the log splitter and the discharge area before starting and operating the equipment.
- Adopt safe lifting and moving techniques when loading/unloading and moving the equipment.

DO NOT:

- Do not allow anyone to operate this unit without proper training.
- This is a single person use machine, do not operate with two or more operators.
- Do not use this machine for anything other than splitting wood.
- Do not put any part of your body and clothing in the log splitting area and near any moving or rotating parts.
- Do not run unit in unventilated spaces. Do not run unit in poorly lit spaces.
- Do not step over the unit.
- Do not operate this equipment under the influence of any type of medication or alcohol which can potentially impair reflexes and or judgment.
- Do not run engine while servicing. Remove spark plug wire before commencing servicing.
- Do not smoke or allow open flames or sparks near unit and always stop the engine when refueling.
- Do not remove guards while operating.
- Do not modify this equipment.

SAFETY

General Use

The object of this manual is to help you use your BlueBird machine safely and to give you information about how to maintain your machine. Please read the manual carefully before attempting to use the machine. If after reading the operator's manual you are still unsure about the safety risks associated with use of the machine, you should not use the machine. Please contact your dealer or BlueBird Customer Service for more information. These safety instructions only address the basics for safe use. It would be impossible in the safety instructions to describe all possible risk situations that could arise when using the machine. You can, however, prevent accidents by always using common sense. For a replacement copy of the operator's manual, contact your dealer.

IMPORTANT INFORMATION

Do not use the machine until you have read the operator's manual carefully and understand the instructions given. All maintenance work or adjustments not described in this manual must be performed by an authorized BlueBird service workshop.

- Read this manual carefully and make sure you understand it before using the machine or performing any maintenance. If the user cannot read this manual, it is the responsibility of the machine owner to explain the contents to the user.
- Follow all safety instructions. Failure to do so may result in injury to yourself or others.
- Accident prevention regulations, other general safety regulations, occupational safety rules and traffic regulations must be followed without fail.
- All users shall be trained in the use of the machine. The owner is responsible for training users.
- Engage an authorized BlueBird workshop for all service and repairs not described in this manual.
- BlueBird original spare parts are designed and specified to maintain high quality and correct fit for optimal durability and lifespan.
- Check that all safety decals are in place.
- Learn how to use the machine and its controls safely and learn to recognize the safety decals.
- Only use the machine for splitting wood logs. It is not intended for any other use.



WARNING!

Under no circumstances may the original design of the machine be modified without written approval from the manufacturer. Such modifications not only affect the performance and durability of the machine but may even pose a safety risk for users and those in the vicinity. Unauthorized modifications to the design of the machine may absolve the manufacturer from liability for any resulting personal injury or property damage. Modifying the machine without written approval from the manufacturer may void the guarantee.

- Check that the machine is in serviceable condition prior to use.
- Only use the machine in daylight or in other well-lit conditions.
- Only allow the machines to be used by adults who are familiar with its use.
- Never allow children or people not trained in the use of the machine to use it. Local laws may regulate the age of the user.
- People and animals can distract you while using the equipment. For this reason, always concentrate and focus on the task at hand. Make sure animals and people maintain a safe distance from the machine.
- Never leave the machine unsupervised with the engine running.
- The machine is tested and approved only with the equipment originally provided or recommended by the manufacturer.




WARNING!

The engine can become very hot. To avoid being burned, you must turn off the engine and wait until all parts have cooled before touching the engine.

SAFETY

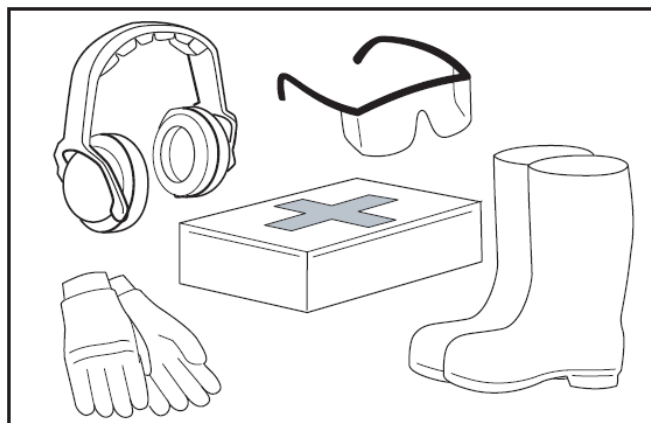
Preparations

- Have first aid equipment at hand when using the machine.
- Ensure all the bystanders (people and or pets) are at a safe distance before operating the equipment.
- Confirm all the guards and protection plates are in place and intact when using the machine.
- Make sure no clothing, long hair or jewelry can catch in moving machine parts.
- Never use the machine barefoot. Always wear protective shoes or protective boots with anti-slip. It is highly recommended to use steel-toe shoes while using the equipment for operator's safety.
- Wear approved ear-protection, eye-protection and hand protection as shown in the figure.




WARNING!

Always use approved protective clothing and approved protective equipment when using the machine. Protective clothing and protective equipment cannot eliminate the risk of accidents, but wearing proper clothing and the correct equipment will reduce the degree of injury should an accident occur. Ask your dealer about approved protective clothing and approved protective equipment recommended by BlueBird.



- Never fuel the unit or run the unit in an enclosed space.
- Clean up the spills after fueling before running the unit.
- Engine exhaust contains carbon monoxide which is a poisonous gas in an enclosed environment. Never run the engine indoors or in confined areas with insufficient ventilation.



WARNING!

Engine exhaust, some of its constituents and certain vehicle components contain or emit chemicals considered to cause cancer, birth defects or other reproductive harm. The engine emits carbon monoxide, which is a colorless, poisonous gas. Do not use the machine in enclosed spaces.

- Smoking, open flames or sparks in the vicinity of the machine are strictly forbidden. Gasoline is extremely flammable and carelessness in handling can result in personal injury or fire.
- Use fresh gasoline and keep lid on gas when not refueling.
- Store fuel away from heat or flame.
- Use a fuel stabilizer to ensure gas remains volatile.
- There are many different state and federal laws concerning gasoline engine use. A spark arrestor may be necessary while using in a wooden area or national forest. Consult authorities in the area you intend to use the equipment. Contact engine manufacturer for further information.
- Make sure the unit is on a stable level surface.
- Get trained on how to start, stop and operate the equipment safely before starting to use the unit.
- Check both the wheels before operating the equipment.
- Do not use the equipment if you are tired, if you have consumed alcohol or if you are taking any other drugs or medication that can affect your vision, judgement or co-ordination.

SAFETY

Operation

- This machine is designed to split wood with grain. Any other use is not intended.
- Split only one log at a time.
- Never try to free stuck log, add or remove logs while the unit is running and wedge is moving on the ram.
- Always stand in the operator zone. Keep caution while operating. Any body part getting pinched between the wedge and the log may cause severe damage or fatal injuries.
- Having a fire extinguisher ready while operating the unit is strongly recommended as a combustion engine is running near wood scraps and chips.
- Do not alter the engine governor to increase maximum speed. The unit is designed to operate at the standard engine factory settings.
- Always stand clear of the splitting area when the unit is running.
- Never try to adjust a piece of log while the unit is operating.
- Keep the air intake on engine clean of any debris.
- Never remove the air cleaner while the engine is operating.
- Do not run unit unsupervised.
- Make sure the area where you are operating the unit is well lit, it is preferred to use the unit in daylight.
- Do not touch the muffler before the unit is completely cooled down.
- Check the safety labels daily and replace those when necessary.
- The tires should be inflated to 60 PSI.
- Check the engine oil daily or during extended operation.

Towing Safety

- Always investigate and understand all local and state regulations regarding towing, licensing and lights before towing. Do not start towing before you confirm that the log splitter you are towing meets all the government mandated towing safety regulations in your area.
- Anyone riding on the log splitter during towing is strictly prohibited. It is a major safety hazard and may result in serious injury.
- Never tow your log splitter over hilly area or uneven terrain without a tow vehicle or adequate help.
- Always check before towing to make sure that the log splitter is correctly and securely attached to the towing vehicle and that the safety chains are secured to the hitch or bumper of the vehicle with enough slack to allow turning.
- Always use a class I or above 2" ball for connection to log splitter. Place a customer supplied lock or lock pin into the latch assembly of the hitch coupler.
- Turn off the fuel shut off valve on OFF position before towing the log splitter and always attach safety chains while towing your log splitter.
- Do not carry wood or any kind of cargo on your log splitter while towing your log splitter.
- Unit must be in horizontal position with pins locked in place before towing. Make sure the ram is not in extended position.
- Towing the log splitter at speeds higher than 45 mph could result in loss of control, damage to the equipment or even serious fatal injury as a result of a crash. Adjust towing speed for terrain and road conditions. Be extra cautious when towing over rough terrain or in bad weather conditions. Avoid sharp turns and steep angles.
- It is very difficult to back up a short wheel-base trailer. It is not recommended to back up while towing the log splitter.
- Be aware of the added length of your log splitter in all driving conditions especially when turning, parking and crossing intersections.
- Disconnect your log splitter from the towing vehicle before operation.
- Do not use and replace the ball or coupler if damaged. Make sure the ball is tight.

SAFETY

Storage

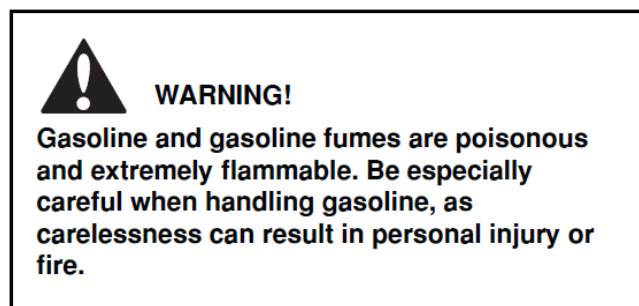
- Allow engine to cool before storing the machine. Never store the machine near an open flame.
- Store the machine with fuel valve closed.
- Store the machine and fuel in such a way that there is no risk that leaking fuel or fumes can come in contact with flames or sparks from electrical machines, engines, relays switches, boilers or similar equipment.
- If IC engine powered power equipment is stored without using frequently then engine will require periodic maintenance before use. The gasoline in the engine has a limited shelf life.
- It is tedious to remove all fuel from carburetor, so it is recommended to add fuel stabilizer to the fuel and fill up the fuel tank.
- Run the unit for a couple of minutes to have all fuel get into all parts of carburetor and shut off the engine. By having the fuel tank full, it reduces the air content which helps in prolonging the life of the unit.
- Even when using stabilized fuel, if the unit is not run for 12 months, the stabilized fuel should be discarded and refilled with fresh fuel. Ensure that you are abiding by all the local government codes while disposing the discarded fuel.
- Using old fuel can leave deposits in the engine and make it harder to start.
- Clean the unit before storage.
- Perform regular periodic maintenance and oil changes as prescribed in the engine manual.

Children

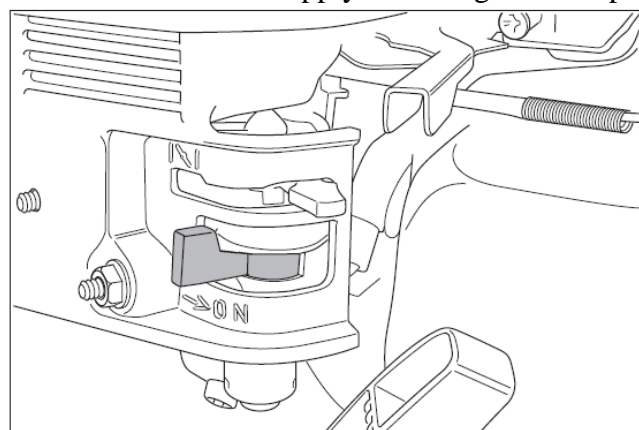
Serious accidents can occur if you fail to be on guard for children in the vicinity of the machine. Never assume that children will stay put where you last saw them.

- Keep children away from the machine and work area. Children must be under close supervision by another adult.
- Keep an eye out and shut off the machine if children enter the work area.
- Never allow children to operate the machine.

Fuel System



- Only store fuel in containers approved for that purpose.
- Never remove the fuel cap and fill the fuel tank when the engine is running.
- Always stop the engine when refueling.
- Do not smoke when filling the gasoline tank and do not pour gasoline in the vicinity of sparks or open flame.
- Never fill the fuel tank indoors.
- Before starting the machine after refueling, it should be moved at least 10 feet (3 M) from the location where it was filled.
- Turn off the fuel supply for storage or transport.



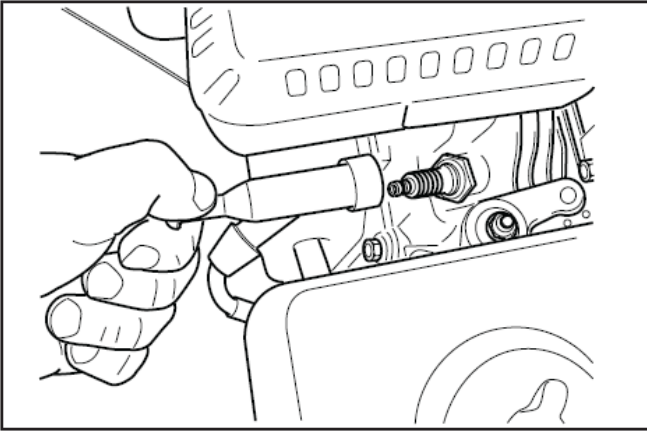
Close the fuel valve.

- If leaks arise in the fuel system, the engine must not be started until the problem is resolved.
- Check the fuel level before each use and leave space for the fuel to expand, because the heat from the engine and the sun can otherwise cause the fuel to expand and overflow.
- Avoid overfilling. If you spill gasoline on the machine, wipe up the spill and wait until it has evaporated before starting the engine. If you spill gasoline on your clothing, change your clothing.

SAFETY

Maintenance

- Never make adjustments with the engine running.
- Disengage drive units, shut off the engine and wait until all moving parts come to a complete stop before making adjustments, performing maintenance or cleaning the machine.
- Disconnect the spark plug cable before beginning repair work.



Disconnect the spark plug cable before repairs



WARNING!

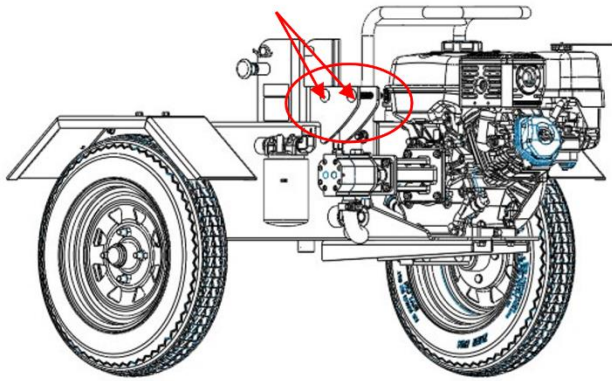
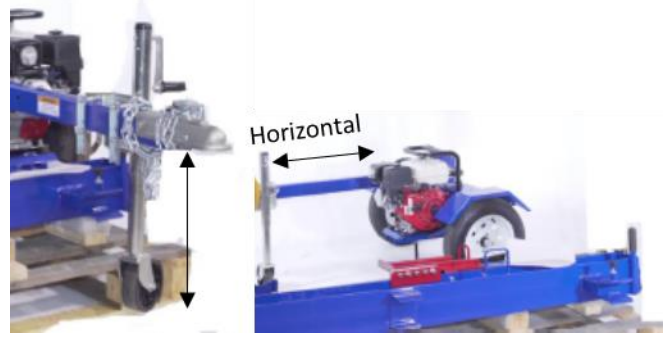
Wait until all moving parts are completely still before performing maintenance on the machine.

Turn off the engine and remove the spark plug cable.

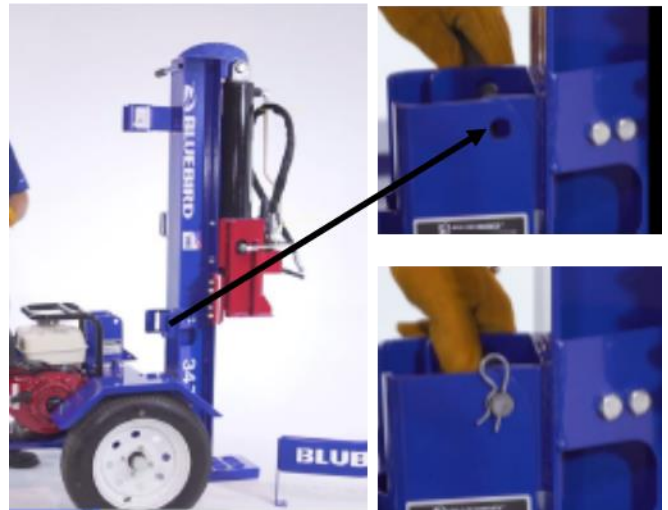
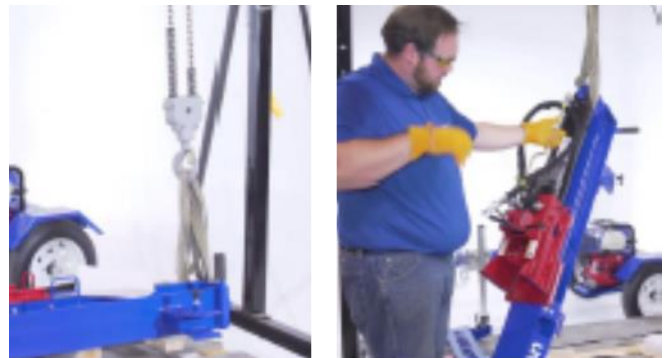
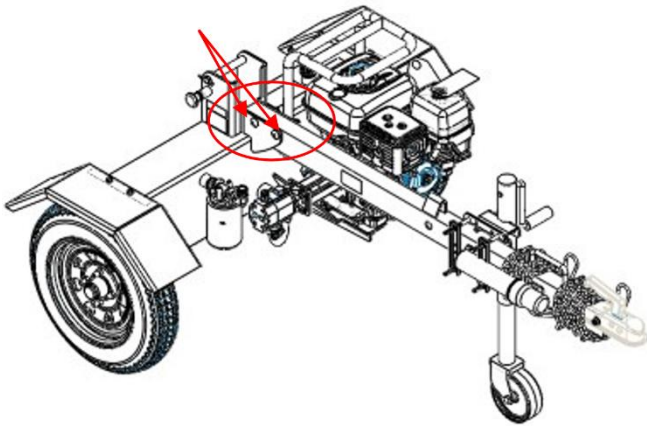
- When doing repairs or maintenance, refer to a qualified repair personnel or contact BlueBird customer service if you are uncertain of the procedure.
- Never open filler plugs or any fitting when unit is running hot.
- Never check hydraulic leaks with your hand, finger or any body part. Hydraulic systems are under very high pressure and can penetrate your skin causing serious injury.
- If filled properly in the beginning, hydraulic fluid in the tank should always be between the “MIN” and “MAX” marks on the dipstick. Operating the equipment at low oil level will damage the pump.
- Do not attempt to increase the engine speed from the factory setting.
- Make sure all the fittings, bolts, nuts etc. are tight and replace any damaged or worn-out parts with approved replacements. Replace worn or damaged decals.
- Change the oil filter after the first 25 operation hours. Fill new filter with new oil before installing to reduce the problem of air getting in the system.
- Before the initial use and after changing the filter, purge the system of any trapped air. To purge air from unit, work the control valve to fit fully extended then retract with no wood in the splitter. Do it multiple times till the ram extends smoothly.
- Always park the machine on even ground before performing maintenance or making adjustments.
- Do not disassemble the engine. This can invalidate your engine warranty. Contact your dealer or BlueBird customer service if you have any questions regarding service or guarantee matters.
- Do not modify safety equipment. Check regularly to be sure it works properly. The machine must not be run with defective or disassembled safety equipment.
- The muffler is designed to maintain sound levels at an approved level and keep direct exhaust away from the user. Exhaust gases from the engine are extremely hot and may contain sparks that can cause fire.
- Never use machine with a defective burner.
- Reduce the risk of fire by removing wood chips, grass, leaves and other debris that may have caught in the machine.
- Replace hoses if the hose sleeves are damaged or worn out.

ASSEMBLY

- A video of assembly is available on BlueBird website www.bluebirdturf.com and QR code on the assembly for reference.
- The top section of crate is screwed by screws that need to be removed. Lift off shipping crate and remove straps holding down the unit to the pallet.
- Remove the two bolts marked in following figure, install the tongue assembly and reinstall the bolts and tighten.



- Using a forklift or engine hoist, attach a sling to the end of the beam, raise the beam up to the upright position. If no lift is available, then it will require at least three people to lift it securely. While two people are lifting, third will stabilize the base on the ground to prevent slipping out. On a level hard surface, the beam will stand upright, and the base can be wheeled up to the upright beam. When the holes line up, insert the pin and the clip.



- Rotate the jack to upright position and lower the wheel so the tongue will be levelled horizontally while installing. Make sure the unit is levelled while taking it off the pallet.

ASSEMBLY

- Use handle at top to lower the beam and secure the pin as shown in the pictures below.



- Ensure that the latch is engaged before operating and towing.



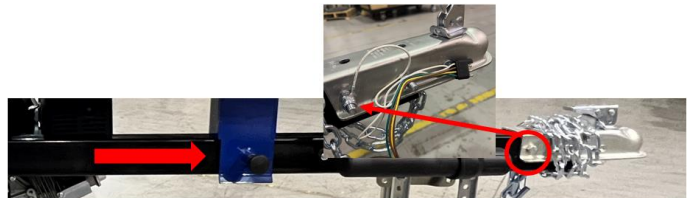
- Route the lower hose up and install the fitting on the control valve.



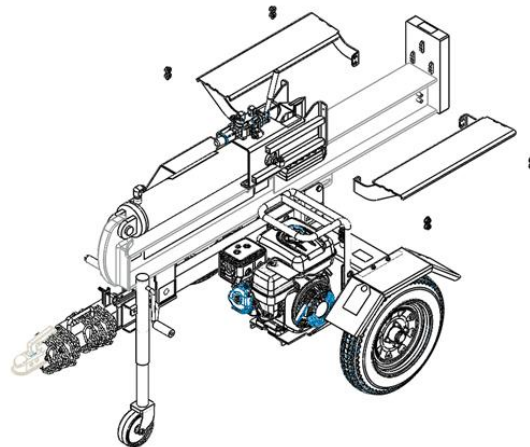
- Now route the upper hose down and connect the hose to the pump.



- Run the lighting harness through the tow bar tube. Remove 2nd nut on the hitch coupler, insert the ground wire (white) terminal and run the nut back in as shown below.



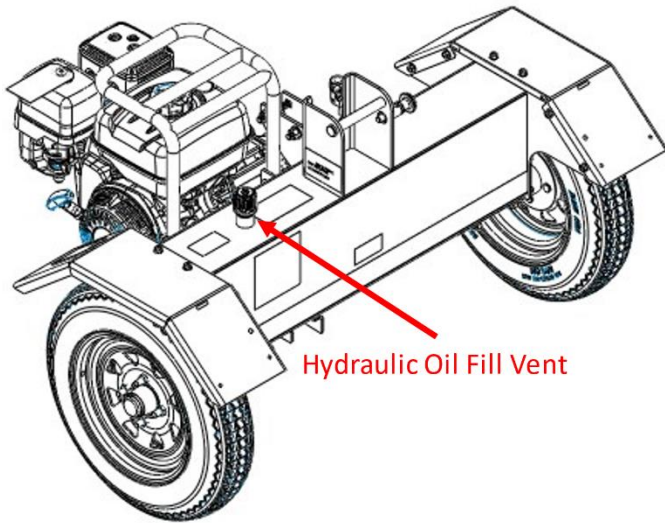
- Align the cradles to the weld studs on both sides and attach those by tightening the nuts.



HYDRAULIC OIL – FILLING INSTRUCTIONS

General Instructions and Safety

- Clean area around the fill port. Make sure no debris enters the hydraulic system.
- Turn off the engine and wait for everything to cool down before opening any hydraulic lines or plugs.
- Never run the engine when the hydraulic tank is empty. The tank must be filled appropriately before operating the unit.
- Fill the hydraulic tank up to the “MAX” level mark on the dipstick with SAE 10W hydraulic oil. Use ATF Dexron III in cold weather below 32°F.
- Unit requires about 7 to 8 gallons of hydraulic oil.



Priming

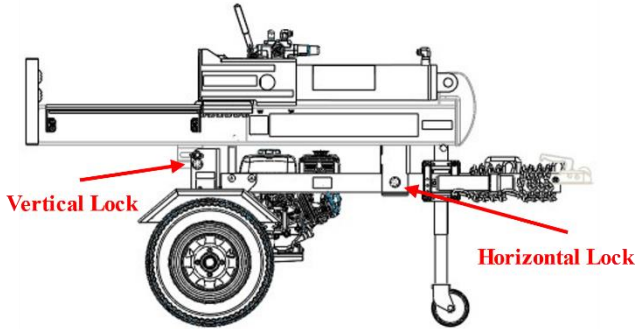
- Remove any logs / debris from splitter path.
- Disconnect the spark plug.
- Hold the control lever in the forward position and pull the starter cord multiple times until the wedge base starts sliding smoothly.
- The unit is self-priming during operation but do not attempt to split logs until it has had a chance to remove the air from the system.

Maintenance

- Periodically check the level of fluid in the hydraulic tank when the unit is turned off and cooled down. If the tank was filled properly as described above and the level of fluid drops below the “MIN” level mark on the dipstick, then the hydraulic circuit has a leakage somewhere.
- Do not check for leaks with your hands and when the unit is running. The leaks could be on the hoses or as a result of loose fittings. With the engine off, you can feel around the fittings for evidence of oil to find loose fittings or hoses leaking. Beyond tightening a loose fitting, all repairs should be performed by someone trained professionally to service hydraulic repairs.

OPERATION

- The unit can be operated in either horizontal or vertical positions. There is a pin that securely locks the unit in either position. To use vertically, release the horizontal pin and tilt until upright and lock into place the vertical pin. To return to the horizontal operating position, release the vertical pin, tilt the unit back to the horizontal position and then lock the pin in place. The knob will close completely when secured.

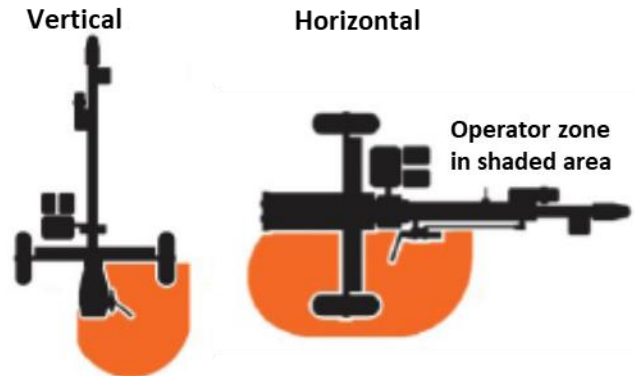


- The appropriate pin lock needs to be released to go to another position. Before operating the unit, confirm that the pin is securely seated in place.

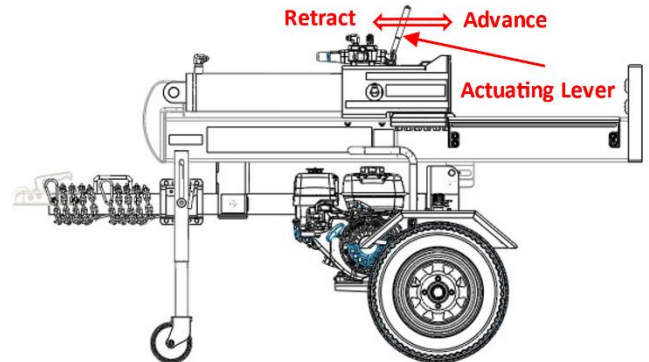


- Check to make sure the log splitter area is clear before using the unit.
- Level the unit.
- Fill the fuel tank before starting and also check the engine oil level.
- Check the level of hydraulic fluid in the tank. If refilled, then purge the system as explained in "Hydraulic Oil – Filling Instruction" before starting the engine.

- Stay in the operator zone as shown in the illustrative image while operating the unit and never reach across the unit while in operation.



- Hold the log by the sides, do not place the log in splitter holding the ends. Put the cut end against the end beam. Make sure the log is placed securely against the foot plate up against the beam.
- Pull the actuating lever to the advance position from neutral position until the log splits or the ram extends fully. Pull the actuating lever in retract position and the ram will go back to its original position.



TROUBLESHOOTING

Engine

- Follow the engine manufacturer’s maintenance and service instructions. Should any malfunction occur with the engine during the warranty period, take it to an authorized service dealer in your area. Do not tear down the engine by yourself as this may void the engine manufacturer’s warranty.
- Most of the engine problems are known to occur from unit inactivity for longer periods of time. In this case, drain the fuel, replace the spark plug and try again with new fuel. If old fuel is known to be in the unit, the carburetor should be disassembled by a trained repair technician.

Note: Refer to engine manufacturer’s Owner’s Manual for all engine service information.

Hydraulic

- If the engine runs but the ram doesn’t work, then the problem is mostly with the hydraulic system

as a result of low hydraulic oil or trapped air in the system. If hydraulic oil level in the tank is below “MIN” mark on the dipstick even though it was filled correctly initially, there is a leak somewhere which could also be drawing in air affecting the ability of the unit to operate properly.

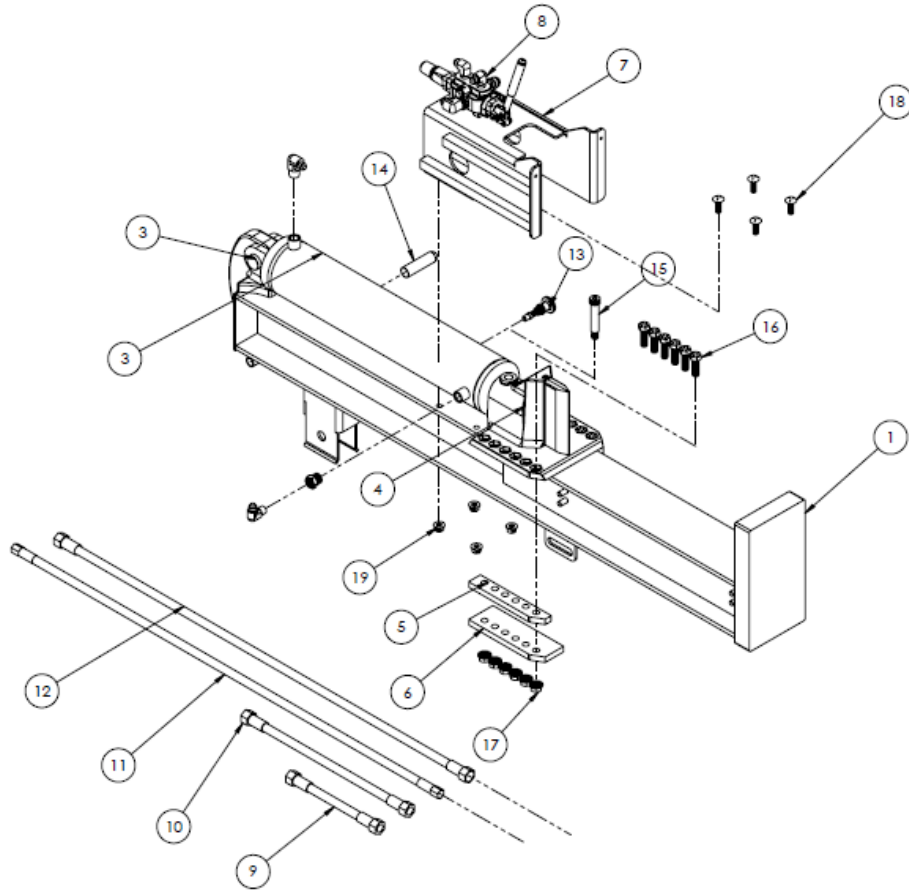
- Never check for leaks with your hands when the unit is running. The system runs under very high pressures and leaks at that pressure may penetrate your skin causing serious injuries.
- With the engine off, you can feel around the fittings for evidence of oil to find loose fittings or hoses leaking. Beyond tightening a loose fitting, all repairs should be performed by someone trained professionally to service hydraulic repairs.
- All new parts must be BlueBird approved parts.
- To purge the air from unit, work the control valve to fully extended position and then retract by pulling the starter cord with no wood in the splitter and engine turned off. Repeat this multiple times until the ram extends smoothly.

Problem		Solution
Engine will not start		F, H, E, D, G
Engine oil will not stay running or smokes		Open choke, low engine oil, E, D, I
Unit operates slowly or not at all		A, B, C, G
A	Low hydraulic oil	Add oil to system
B	Air in the system	Purge unit without load
C	Kinked hydraulic line	Unkink lines
D	Old fuel	Replace fuel / clean carburetor
E	Fuel shut off	Turn on
F	Engine shut off	Turn on
G	Low ambient temperature	Wait until warmer temperatures or change fluid
H	Choke control open / closed	Close / open choke
I	Gas in oil	Replace engine oil

Contact BlueBird Customer Service for any further technical assistance in repairs or maintenance.

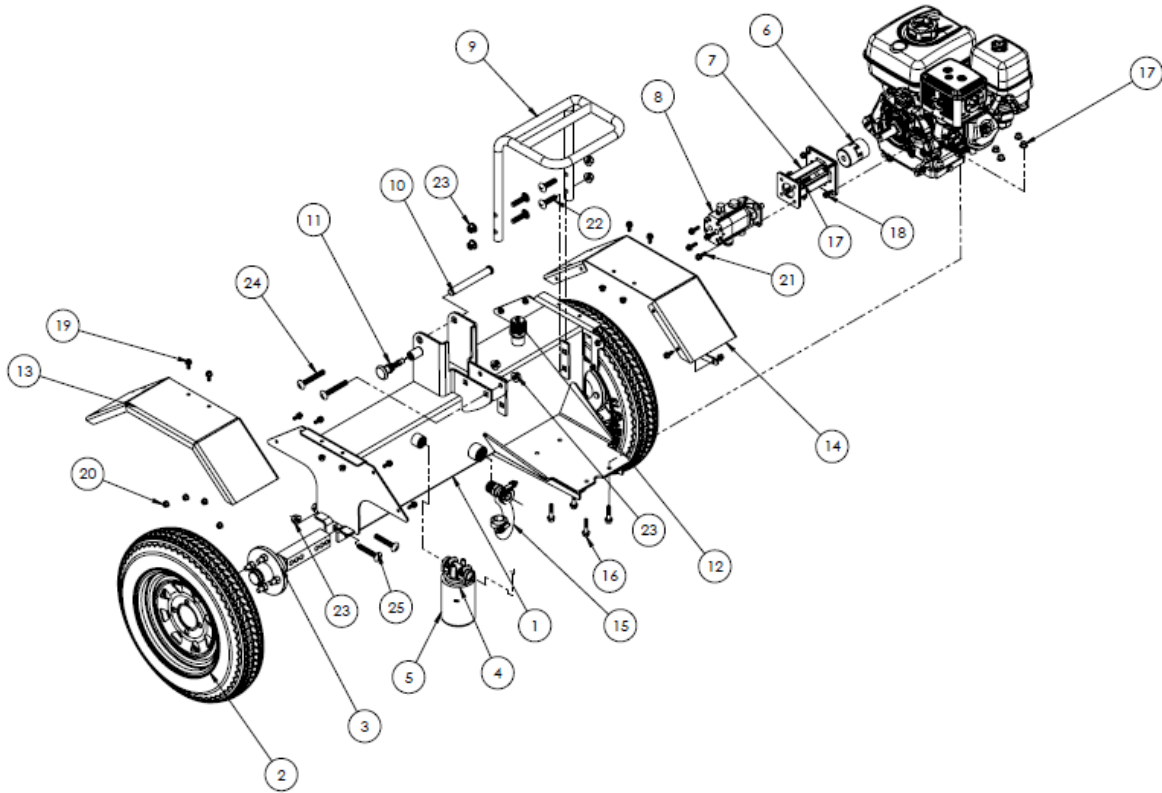
PARTS MANUAL

I Beam Assembly



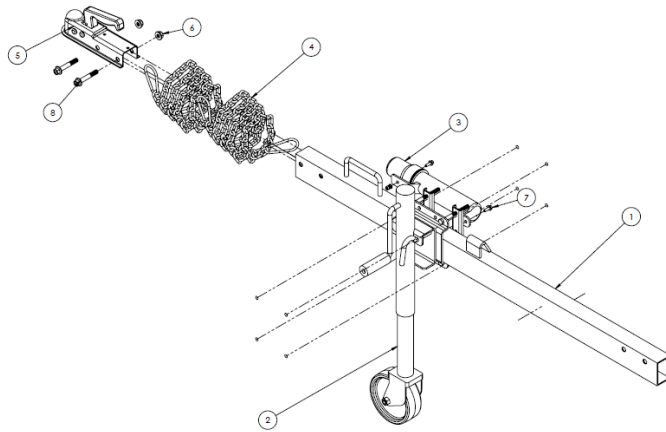
Sr. No.	Description	Part Number
1	I Beam Weldment	577124337
2	Cylinder	577124398
3	Rear Pin	577123122
4	Splitting Wedge	577124418
5	Slide Plate - Mid	577124415
6	Slide Plate - Bottom	577124416
7	Dislodger	577121556
8	Control Valve	577121626
9	Hydraulic Hose	577121574
10	Hydraulic Hose	577121575
11	Hydraulic Hose	577121576
12	Hydraulic Hose	577121577
13	Pop Pin	577121565
14	Handle Grip	577121581
15	Screw, Shoulder, 0.75X3.25, 5/8-11X0.875, CLTV	577124417
16	HCS, 5/8-11, GR8, CLTV	577124414
17	Nut, Hex, Serrated Flange, 5/8-11, CLTV	577124413
18	Bolt, Carriage, Sqnk, 1/2-13 X 1-1/2, GR5, CLTV	577124433
19	Nut, Hex, Serrated Flange, 5/8-11, CLTV	577124413

PARTS MANUAL



Sr. No.	Description	Part Number
1	Hydraulic Tank	577121580
2	Wheel and Tire	577121571
3	Wheel Hub	577121572
4	Filter Assembly with Filter	577121562
5	Filter	577121563
6	Coupling Engine to Pump	577121554
7	Pump Connector	577121585
8	Pump	577121560
9	Engine Guard	577121568
10	Clevis Pin	577121586
11	Pop Pin	577121566
12	Vent Cap Dipstick Plug	577123481
13	RH Fender	577121806
14	LH Fender	577121569
15	Hydraulic Hose Tank to Pump	577121578
16	FHCS, 3/8-16 X 1-3/4, GR5, CLTV	577124458
17	Nut, Flanged, Center-Lock, 3/8-16, GR5, CLTV	577124405
18	FHCS, 5/16-24 X 1, GR5, CLTV	577124439
19	FHCS, 5/16-18 X 3/4, GR5, CLTV	577124443
20	Nut, Flanged, Center-Lock, 5/16-18, GR5, CLTV	577124049
21	FHCS, 5/16-18 X 1, GR5, CLTV	577124441
22	Bolt, Carriage, Sqnk, 1/2-13 X 2, GR5, CLTV	577124440
23	Nut Hex Flanged, Nyloc, 1/2-13, GR5, CLTV	577124535
24	Bolt, Carriage, Sqnk, 1/2-13 X 3-1/2, GR5, CLTV	577124456
25	Bolt, Carriage, Sqnk, 1/2-13, GR5, CLTV	577124442

PARTS MANUAL



Sr. No.	Description	Part Number
1	Tongue	577121588
2	Trailer Jack	577121612
3	Manual Holder	577121613
4	Safety Chain	577121615
5	Hitch Coupler	577121567
6	FHCS, 5/16-24 X 1, GR5, CLTV	577124439
7	FHCS 1/4-20 X 3/4 GR5, CLTV	577124239
8	FHCS, 7/16-14 X 2-3/4, GR5, CLTV	577124435

License Plate and Lighting Parts

Sr. No.	Description	Part Number
1	License Plate and Wiring Kit	577121810
2	Light Housing	577121807
3	License Mount Bracket	577121808
4	License Plate Bracket	577121809

Decals

Sr. No.	Description	Part Number
1	45 MPH Maximum Speed	577121593
2	Pinch Point	577121595
3	Hydraulic Oil Only	577121596
4	Control Lever Operation	577121597
5	Vertical Lock	577121598
6	Operating Instructions	577121599
7	Hydraulic Fill Plug	577121601
8	Hydraulic Drain Plug	577121602
9	Model Number	577121603
10	Strip Reflector	577121604
11	Bluebird Decal	577121605

Log Cradle Kit

Sr. No.	Description	Part Number
1	Log Cradle	577124335
2	Nut Hex Flanged, Nyloc, 1/2-13, GR5, CLTV	577124535

NOTES
